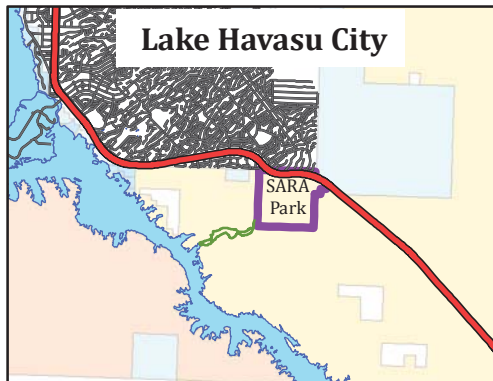
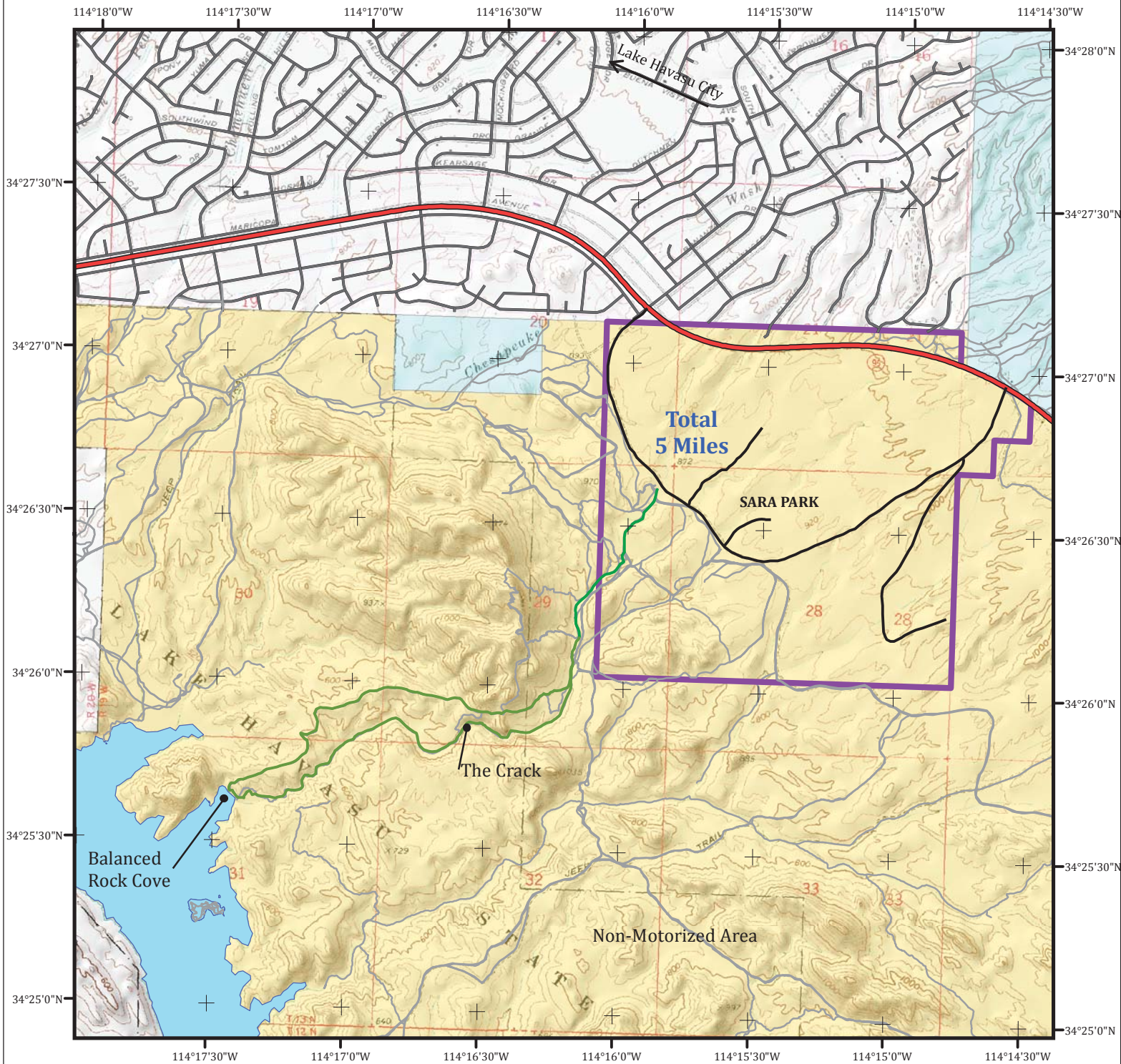


Crack in the Mountain Trail



Legend

- Crack in the Mountain Trail
- Non-Motorized Trails
- Bureau of Land Management
- Private
- State



United States Department of the Interior
Bureau of Land Management
Lake Havasu Field Office
2610 Sweetwater Ave
Lake Havasu City, AZ 86406
928-505-1200



0 0.1250.25 0.5 Miles

1:30,631

Map for illustrative purposes only.
Not intended for navigation purposes.
All data subject to change and must be verified
by appropriate public records.